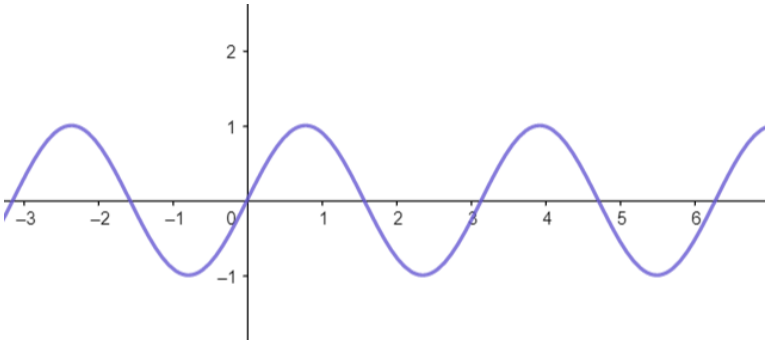
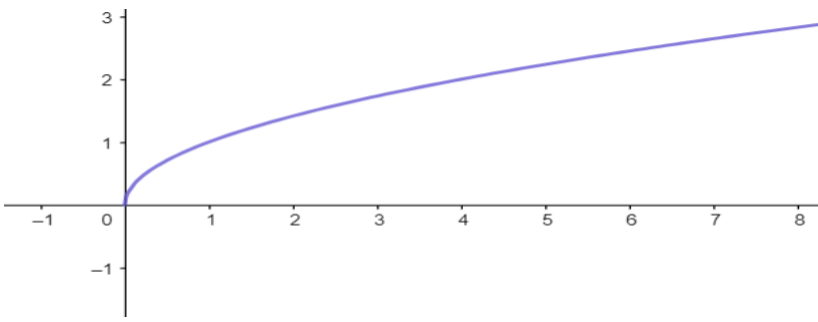
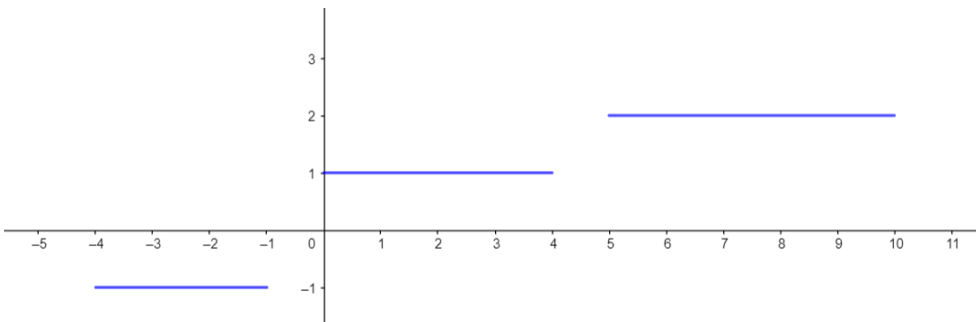
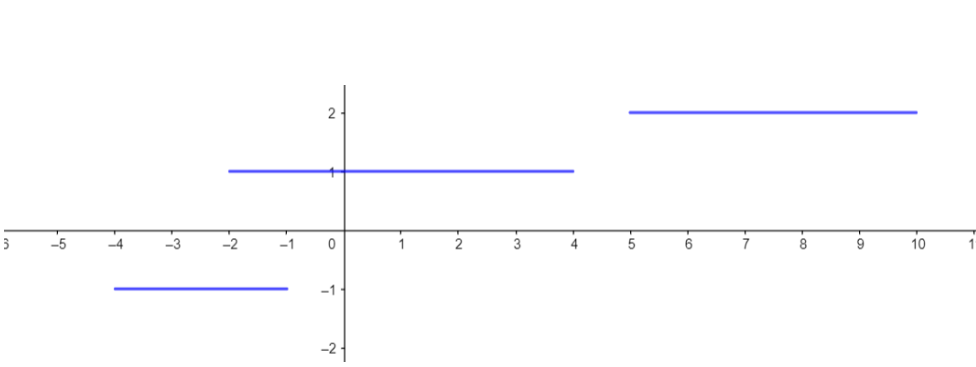
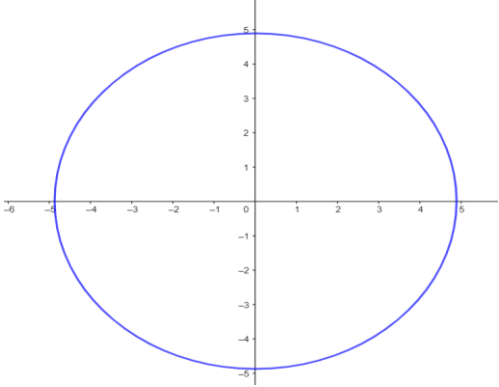
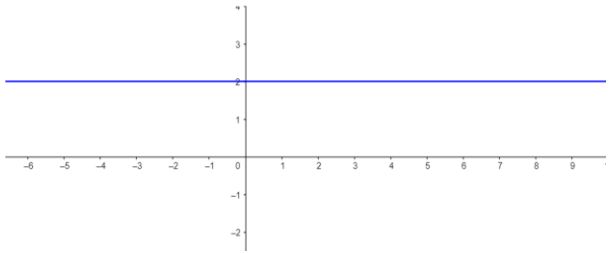
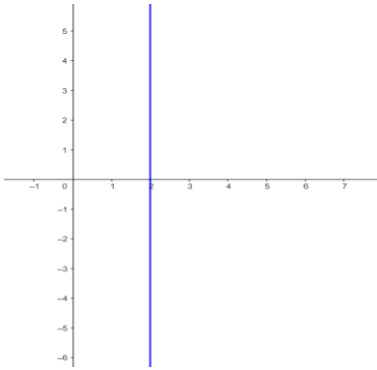
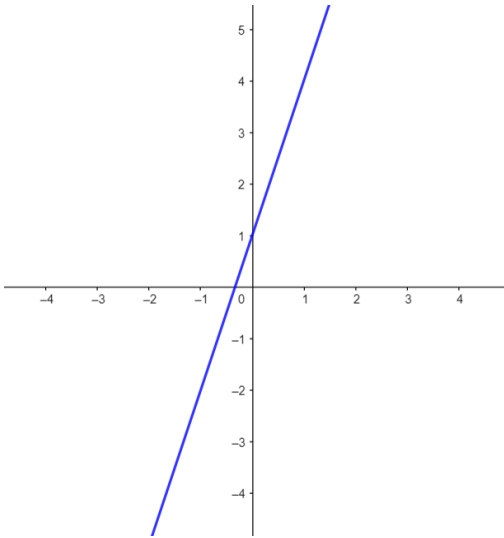


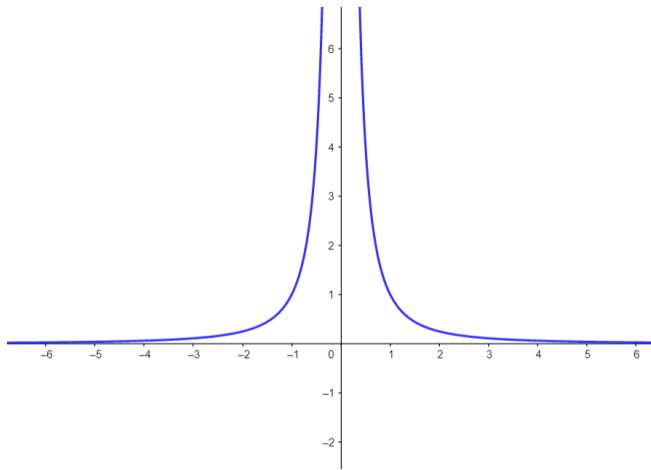
Übungen zum Funktionsbegriff

Bestimmen Sie, ob es sich um Funktionen handelt.

1	 A graph of a sine wave on a Cartesian coordinate system. The x-axis ranges from -3 to 6 with tick marks every 1 unit. The y-axis ranges from -1 to 2 with tick marks at -1, 0, 1, and 2. The curve passes through the origin (0,0), has a peak at (1,1), a trough at (2,-1), another peak at (3,1), a trough at (4,-1), and another peak at (5,1).	ja/nein
2	 A graph of a square root function on a Cartesian coordinate system. The x-axis ranges from -1 to 8 with tick marks every 1 unit. The y-axis ranges from -1 to 3 with tick marks at -1, 0, 1, 2, and 3. The curve starts at the origin (0,0) and increases monotonically, passing through points like (1,1) and (4,2).	ja/nein
3	 A graph of a step function on a Cartesian coordinate system. The x-axis ranges from -5 to 11 with tick marks every 1 unit. The y-axis ranges from -1 to 3 with tick marks at -1, 0, 1, 2, and 3. The function consists of horizontal line segments: y = -1 for x in [-4, -1), y = 1 for x in [0, 4), and y = 2 for x in [5, 10). There are jump discontinuities at x = -1 and x = 4.	ja/nein
4	 A graph of a step function on a Cartesian coordinate system. The x-axis ranges from -5 to 11 with tick marks every 1 unit. The y-axis ranges from -2 to 2 with tick marks at -2, -1, 0, 1, and 2. The function consists of horizontal line segments: y = -1 for x in [-4, -1), y = 1 for x in [-2, 4), and y = 2 for x in [5, 10). There are jump discontinuities at x = -1 and x = 4.	ja/nein

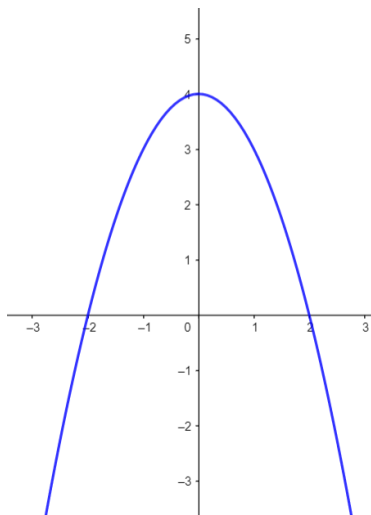
5		ja/nein
6		ja/nein
7		ja/nein
8		ja/nein

9



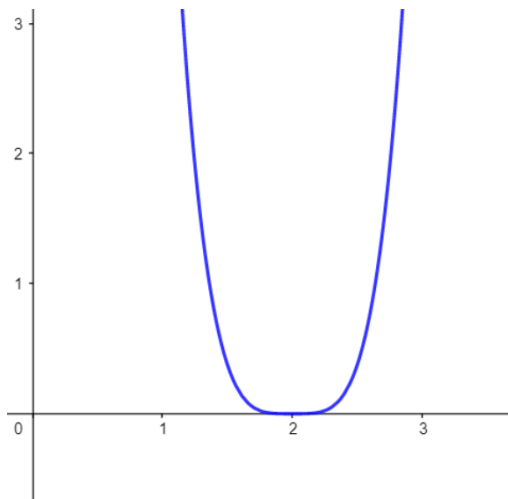
ja/nein

10



ja/nein

11



ja/nein