

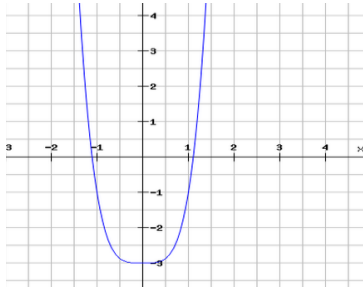
1. Untersuchen Sie auf Symmetrie und $\lim_{x \rightarrow \pm\infty} f(x)$!

- a. $f(x) = 2x^3 - 3x^2 + 3$
- b. $f(x) = -3x^4 + 4x^2 + 4$
- c. $f(x) = -5x^3 - 2x + 6$

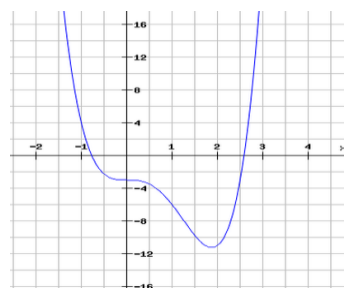
2. Welcher Graph gehört zu welcher Funktionsvorschrift?

- a) $f(x) = 2x^5 + 3x^2$
- b) $f(x) = 2x^4 - 3$
- c) $f(x) = 2x^4 - 5x^3 - 3$
- d) $f(x) = -2x^5 + 3x^2 - 3$
- e) $f(x) = 2x^5 + 3x^3$
- f) $f(x) = -2x^5 + 3x^3$

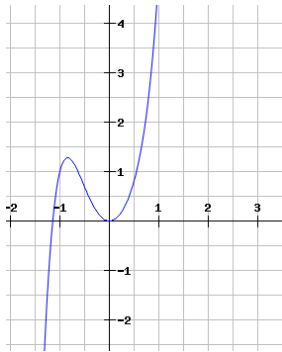
1.



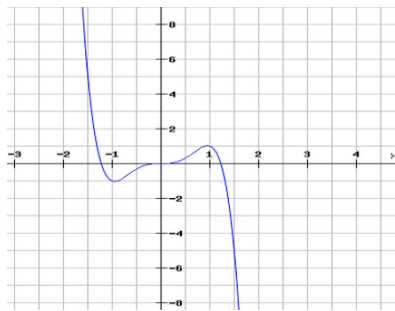
2.



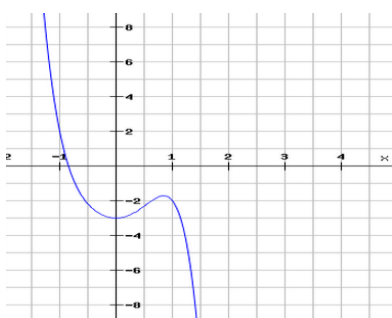
3.



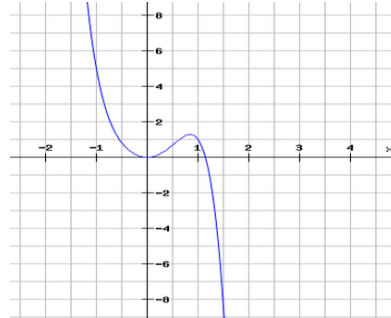
4.



5.



6.



7.

