

## Übungen zur Lage von ganzrationalen Funktionen

Welcher Graph gehört zu den Funktionsgleichungen?

$$f_1(x) = x^4 + 5x^2 + 3$$

$$f_5(x) = -4x^5 + 3x^2 - 7$$

$$f_2(x) = 2x^4 + 3x^3 - 5x - 7$$

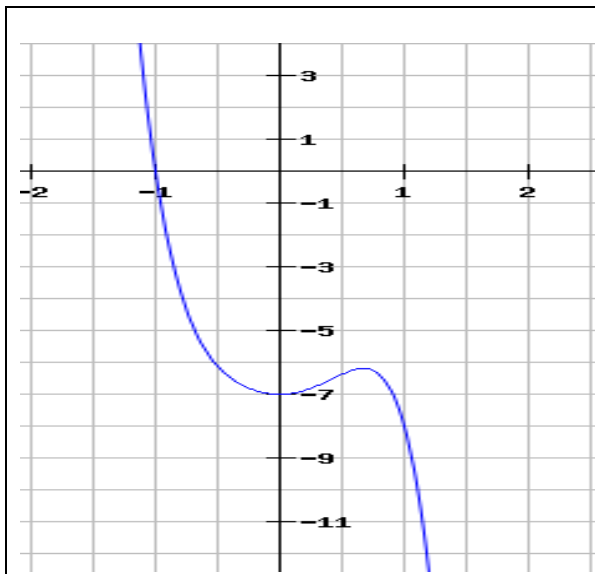
$$f_6(x) = -3x^4 + 9x^3 - 2x^2 + 3$$

$$f_3(x) = -5x^6 + 3x^3 - 2x^2 - 7$$

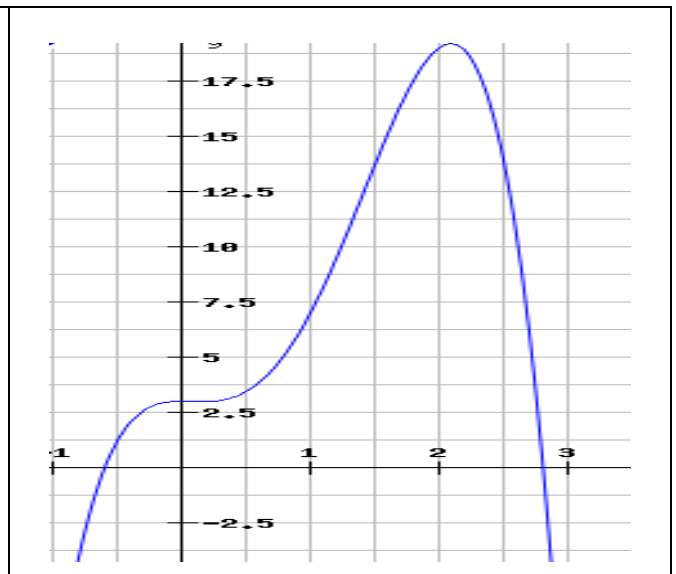
$$f_7(x) = 2x^5 - 3x^3 + 3$$

$$f_4(x) = -x^3 + 2x + 3$$

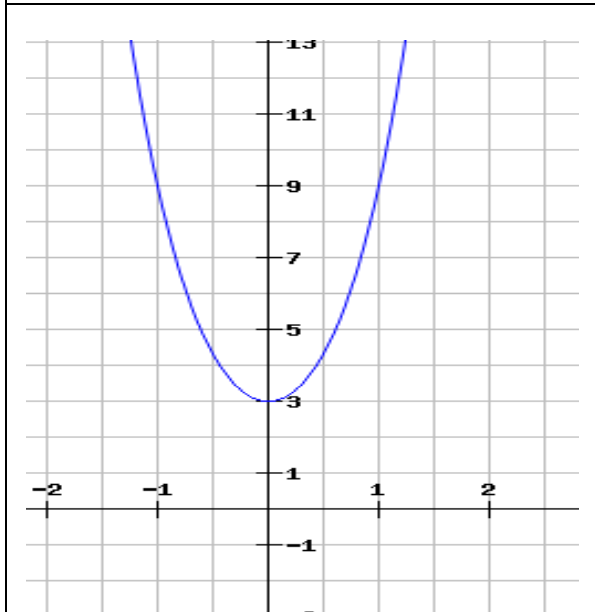
$$f_8(x) = x^5 + 3x^2 - 7$$



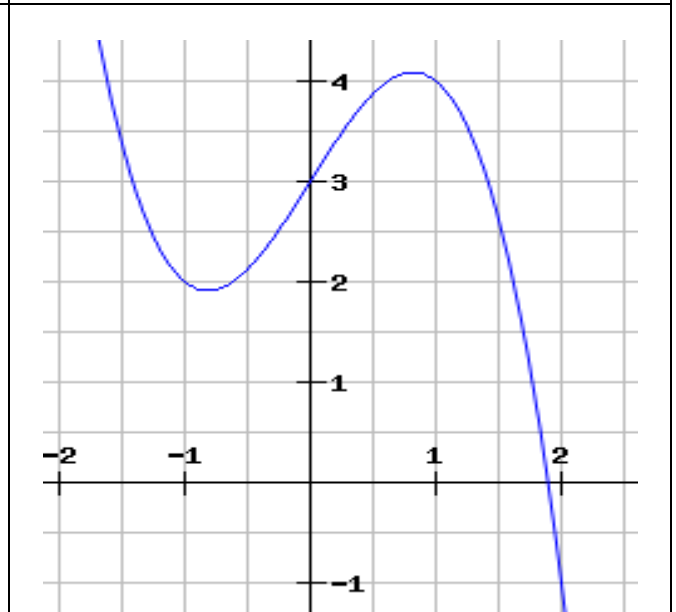
A



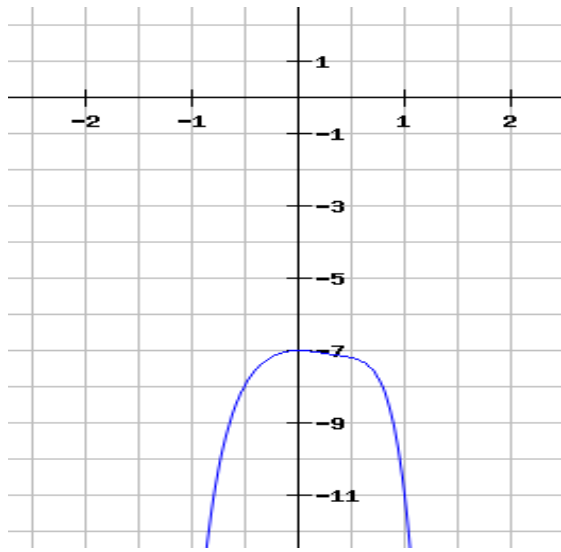
B



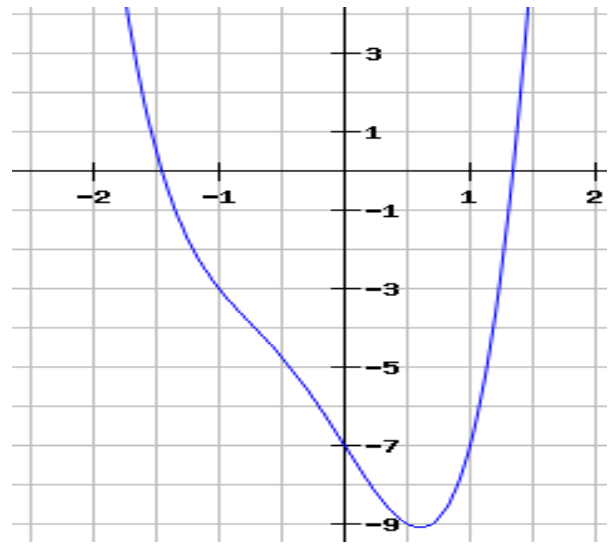
C



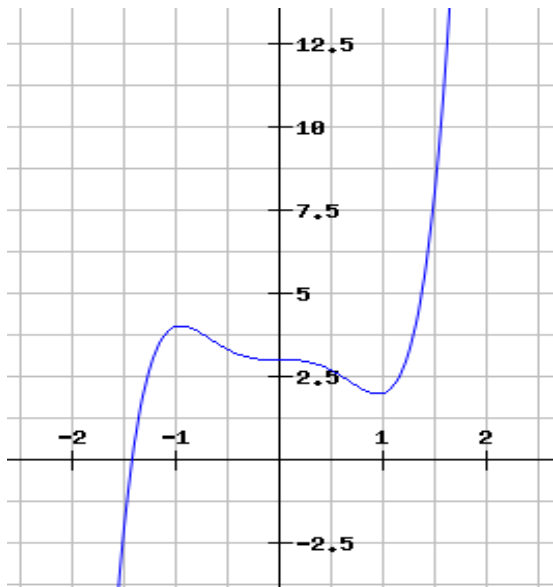
D



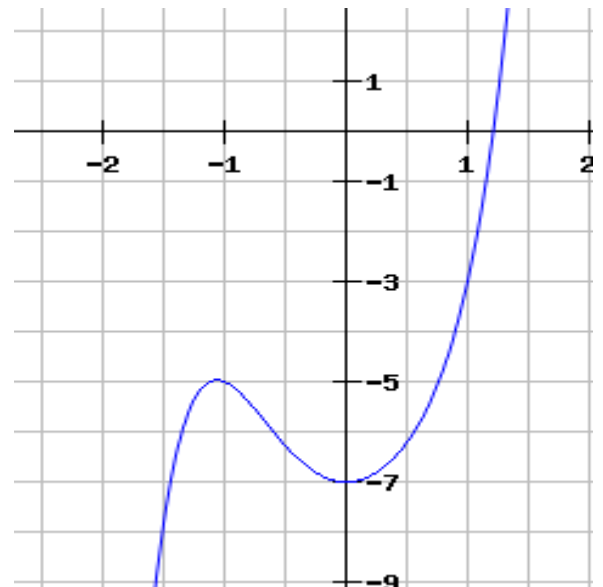
E



F



G



H